



# Power & Energy

Lockton Greater China

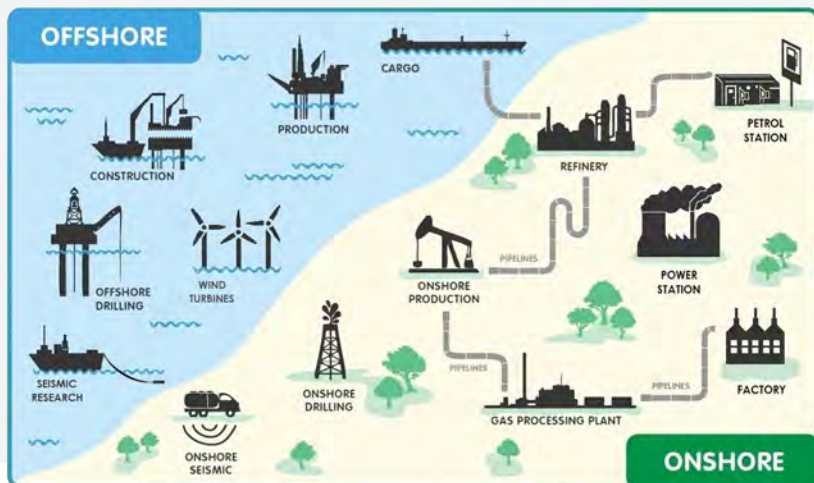
## Seeking Out New Opportunities



Whether you are involved in oil exploration, refining, electricity generation or any kind of building, civil engineering, plant and machinery erection and construction projects in local or at overseas, Lockton has the expertise and resources to provide insurance service and risk management solutions tailored to your needs.

## A Broad Range of Expertise

Through our Asia-wide network of offices and global resources, we can provide a local service to your operations, supported by our technical hubs in both Hong Kong and mainland China.



A Global Professional Firm



## Our Products & Capabilities



### Upstream Energy Capabilities (Onshore & Offshore)

- ❖ **Physical Damage**
  - Property ; Platform, Wellheads, Subsea, Pipelines, Oil in Store/Transit
  - Drilling and/or producing and/or Seismic equipment/ consumables owned or in the Care Custody or Control of Assured
  - Cargo; Oil/ Product Cargo whilst in store and/or transit and product in pipelines and flowlines and Equipment, Consumables whilst in store
  - Seismic Data reacquisition
- ❖ **Operator's Extra Expenses**
  - Control of Well, Re-drill, Seepage & Pollution, Clean up/ Contamination
- ❖ **OPOL**
  - Liabilities assumed by assured under Offshore Pollution Liability Agreement
- ❖ **Third Party Liabilities**
  - Legal and Contractual Third Party Liability arising out of scheduled operations of the Insured.
- ❖ **Loss Of Production Income**
  - Business Interruption following a peril insured under policy

### Downstream Energy Capabilities (Onshore)

- ❖ **Oil & gas**
  - Refineries
  - LPG & LNG
  - Terminal Storage & distribution
- ❖ **Petrochemical**
  - Refineries associated with the production of wide range of specialist olefins & aromatics based products
  - Facilities handling a variety of feedstocks including ethylene, benzene, butenes and propylene
  - Facilities and production of further specialist products for use across plastics and chemical industries
  - Polymer/ Co-polymer & resin production
  - Fertiliser production, including ammonia based products
- ❖ **Midstream**
  - Gas Plants
  - Gathering systems
  - Processing (including fractionation/treatment facilities)
  - Terminals, pipeline distribution
  - Export terminals
- ❖ **Power generation & utilities**
  - Coal & gas powered
  - Renewable energy (wind/solar/CSP/ hydro/biomass)

## A Team You Can Trust

StrategicRISK's 2015 UK Corporate Insurance Buyers Survey



**Carol Chan**  
Senior Vice President,  
Greater China



**Eric Tsui**  
Senior Vice President  
Hong Kong



**Darwin Gu**  
Senior Vice President  
Head of Shanghai



**Tessie Tang**  
Senior Vice President  
Head of Beijing



**Grace Lan**  
Senior Vice President  
Head of Guangdong

Based on a survey of risk managers and insurance buyers across the FTSE 250, Lockton ranked top of all brokers for "client responsiveness".

Respondents made it clear that they value bespoke solutions, innovative ideas and great service rather than efforts to sell more products.



A loyal, stable, experienced team ensuring continuity of service and strong relationship with clients



A 96% high Client Retention Rate



We arrange insurance programs for all types of construction and engineering



The division has a strong and well-established presence in the insurance market

### Lockton Companies (Hong Kong) Ltd.

9/F, PCCW Tower, Taikoo Place, 979 King's Road, Island East, Hong Kong  
Tel: +852 2250 2828 Fax: +852 2250 2838

### Lockton Companies (Shanghai) Insurance Brokers Ltd.

Unit 01-02, 3rd Floor, Lujiazui Plaza, 1600 Century Avenue, Pudong New Area Shanghai 200122, China  
Tel: +86 21 5081 2338 Fax: +86 21 5820 8131